

Nicolai Rimsky-Korsakov
Capriccio Espagnole, Op. 34

Trombone I.

I. Alborada.

Vivo e strepitoso.

f A 12 B *f* C 30 *attacca*

II. Variazioni.

Andante con moto 21 19 Poco meno mosso. 28 Viol. I. 1 2 3
D 3 3
Tempo I. 12 F 15 G 8 3
f *f* *rit.* *attacca*

III. Alborada.

Vivo e strepitoso.

H 12 I *f* K 29 *f* *lunga* *attacca*

Trombone I.

IV. Scena e Canto gitano.

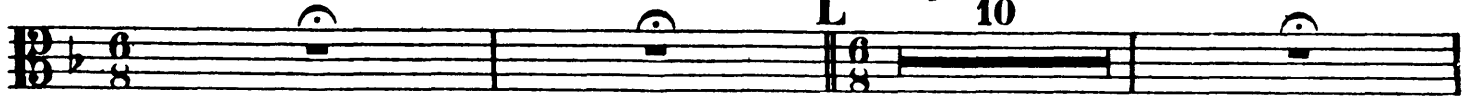
Allegretto.

quasi Cadenza (I)

Cadenza (II) Violino Solo.

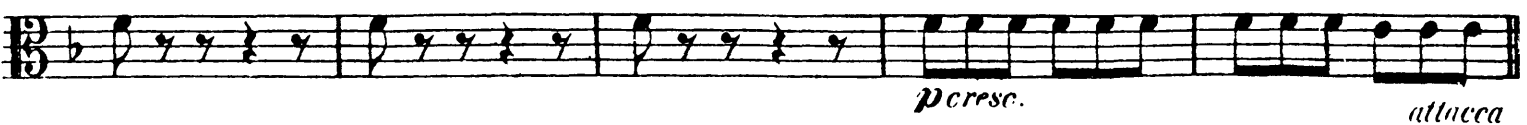
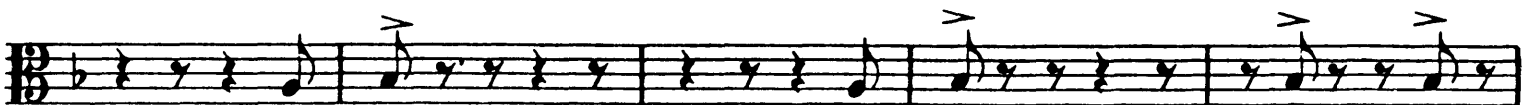
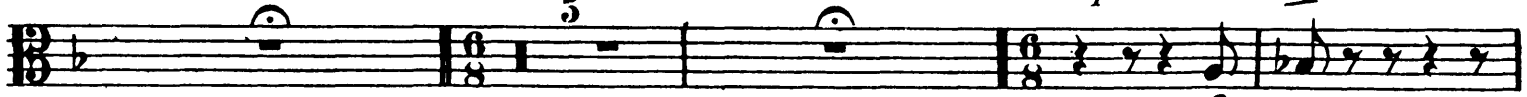
a tempo

Cadenza (III) Flauto Solo.



Cadenza (IV) Clarinetto Solo. *a tempo*

Cadenza (V) Arpa Solo. *a tempo*



V. Fandango asturiano.



Trombone I.

Viol. I. u. II.
f
ff

Measures 12-20. The score includes markings for **T** (Trombone I), **U** (Trombone II), **V** (Violin I), and **W** (Violin II). Dynamics include *f*, *ff*, and *fz*. There are also markings for **X** and **Y**.

Coda.
Vivo. (Tempo di comincio.)

Measures 21-30. The score includes markings for **X**, **Y**, and **Z**. Dynamics include *f* and *ff*. The tempo marking **Presto.** is present.

Nicolai Rimsky-Korsakov
Capriccio Espagnole, Op. 34

Trombone II.

I. Alborada.

f

A 12 B

f

C 30

attacca

II. Variazioni.

Andante con moto. 21 D 19 E 28 Poco meno mosso. Viol. I. 1 2 3 4

3 3

Tempo I. 12 F 15 G 8 3

rit *attacca*

III. Alborada.

Vivo e strepitoso.

H 12

Trombone II.

Musical notation for Trombone II, measures 1-29. The score begins with a first ending bracket labeled 'I' and a dynamic marking of *f*. The second ending bracket is labeled 'K' and contains measure 29. The piece concludes with a *fz* dynamic and the instruction 'lunga' above the final note, followed by 'attacca' below the staff.

IV. Scena e Canto gitano.

Allegretto.

Musical notation for Trombone II in the 'IV. Scena e Canto gitano' section, measures 1-22. The section is marked 'Allegretto' and includes several cadenzas: 'quasi Cadenza (I)', 'Cadenza (II) Violino Solo.', 'Cadenza (III) Flauto Solo.', 'Cadenza (IV) Clarinetto Solo.', and 'Cadenza (V) Arpa Solo.'. The tempo is marked 'a tempo'. The score features dynamic markings of *f*, *fz*, and *mf*. Performance instructions include 'lunga' above measure 10 and 'attacca' below the final measure. Measure numbers 1, 5, 9, 10, 14, and 22 are indicated. The section concludes with a *p cresc.* marking and 'attacca' below the staff.

Trombone II.

V. Fandango asturiano.

3 *ff* 20 R 25 S 40 T 18

U 12 Viol I u II 13 14 15 16 17

18 19 20 *fz fz* 2 *fz fz* 2 V 18 W *ff*

f fz fz X

Coda.
Vivo. (Tempo di comincio.)

Y 11 *f fz f*

Z

Presto.

Nicolai Rimsky-Korsakov
Capriccio Espagnole, Op. 34

Trombone III.
I. Alborada.

Vivo e strepitoso.

f

A 12 B *f*

C 30 *attacca*

II. Variazioni.

Andante con moto.

21 D 19 E Poco più mosso. Violini. 28 1 2 3 4 5

4 4

Tempo I. 12 F 15 G 8 3 *rit.* *attacca*

p *f* *f* *f*

III. Alborada.

Vivo e strepitoso.

H 12 I *f*

K 29 *lunga* *fz* *attacca*

Trombone III.

IV. Scena e Canto gitano.

Allegretto.

quasi Cadenza (I)

Cadenza (II) Violino Solo

L *a tempo*

Cadenza (III) Flauto

Cadenza (IV) Clarinetto

10

a tempo Cadenza (V) Arpa *a tempo*

5

9

22

0 14 P 6 Ob. Fl. 7 8 9

10

4

p cresc. *allacca*

V. Fandango asturiano.

20 R 25 S 40

Trombone III.

Musical score for Trombone III, measures 13-20. The score is written in bass clef with a key signature of two sharps (F# and C#). Measure 13 is marked with a 'T' and a fermata. Measure 14 is marked with a 'U' and a fermata. Measure 15 is marked with a 'V' and a fermata. Measure 16 is marked with an 'X' and a fermata. Measure 17 is marked with a 'W' and a fermata. Measure 18 is marked with a 'Y' and a fermata. Measure 19 is marked with a 'Z' and a fermata. Measure 20 is marked with a '2' and a fermata. The score includes dynamic markings such as *fz* and *ff*. Above the staff, there are markings for 'Viol. I u. II.' and '2'.

Coda.

Vivo. (Tempo de comincio.)

Musical score for Coda, measures 21-28. The score is written in bass clef with a key signature of two sharps (F# and C#). Measure 21 is marked with a '2'. Measure 22 is marked with a 'Y'. Measure 23 is marked with a 'Z'. Measure 24 is marked with a '2'. Measure 25 is marked with a '2'. Measure 26 is marked with a '2'. Measure 27 is marked with a '2'. Measure 28 is marked with a '2'. The score includes dynamic markings such as *fz* and *ff*.

Presto.

Musical score for Presto, measures 29-36. The score is written in bass clef with a key signature of two sharps (F# and C#). Measure 29 is marked with a '2'. Measure 30 is marked with a '2'. Measure 31 is marked with a '2'. Measure 32 is marked with a '2'. Measure 33 is marked with a '2'. Measure 34 is marked with a '2'. Measure 35 is marked with a '2'. Measure 36 is marked with a '2'. The score includes dynamic markings such as *fz* and *ff*.

Nicolai Rimsky-Korsakov
Capriccio Espagnole, Op. 34

TROMBONE I (Bass Clef)

I. Alborado.

Vivo e strepitoso.

Musical score for Trombone I, Part I: Alborado. The score is in bass clef, key of D major, and 2/4 time. It begins with a forte (*f*) dynamic. The first line contains measures 1-9. The second line starts at measure 10 and includes first ending 'A' (measures 10-11), second ending 'B' (measures 12-13), and measure 28. The third line starts at measure 28 and includes first ending 'C' (measures 37-38) and measure 30. The piece concludes with an *attaca.* marking.

II. Variazioni.

Andante con moto.

Poco meno mosso.

Musical score for Trombone I, Part II: Variazioni. The score is in bass clef, key of B-flat major, and 3/8 time. It begins with a forte (*f*) dynamic. The first line contains measures 73-76, including first ending 'D' (measures 21-22) and first ending 'E' (measures 19-20). A violin (Vn. I) part is shown in treble clef with first endings 1, 2, 3, and 4. The second line starts at measure 145 and includes first ending 'F' (measures 12-13) and first ending 'G' (measures 15-16). The third line starts at measure 158 and includes first ending 'H' (measures 8-9) and first ending 'G' (measures 3-4). The piece concludes with a *rit.* marking and an *attaca.* marking.

III. Alborada.

Vivo e strepitoso.

Musical score for Trombone I, Part III: Alborada. The score is in bass clef, key of B-flat major, and 2/4 time. It begins with a forte (*f*) dynamic. The first line contains measures 201-208. The second line starts at measure 209 and includes first ending 'H' (measures 12-13).

Rimsky-Korsakov — Capriccio Espagnole, Op. 34

The Orchestra Musician's
CD-ROM LIBRARY™

2

TROMBONE I (Bass Clef)

227 **I** *f*

237 **K** 29 *lunga* *sf* *sf* *attaca.*

IV. Scena e Canto gitano.

Allegretto.

273 *quasi Cadenza (I)* *Cadenza (II) Violin Solo.* **L** *a tempo* 10 *Cadenza (III) Flute Solo.*

286 *Cadenza (IV) Clarinet Solo.* *a tempo* 5 *Cadenza (V) Harp Solo.* *a tempo* *f*

295 **M**

301 9 *f*

314 *sf* **N** 22 **O** 14 **P** 6 *sf*

360 *Ob. Fl.* 7 8 9 10 **Q** *f*

365

371 4 *mf* *p cresc.* *attaca.*

V. Fandango asturiano.

382 *ff* 20 **R** 25 **S** 35 **5**

471 **T** 18 **U** 12

Rimsky-Korsakov — Capriccio Espagnole, Op. 34

TROMBONE I (Bass Clef)

501 Vn. I, II *f* 13 14 15 16 17 18 19

508 Tbn. I *sf* 20 *sf* *sf* *sf*

517 V 18 *sf* W

544 X

553 Coda. *Vivo.* (Tempo di cominico.)

561 Y 11 *sf* *f*

582 Z

588

595 *Presto.*

603

Nicolai Rimsky-Korsakov
Capriccio Espagnole, Op. 34

TROMBONE II (Bass Clef)

I. Alborado.

Vivo e strepitoso.

Musical score for Trombone II, I. Alborado. The score is in bass clef, key of D major, and 2/4 time. It begins with a dynamic marking of *f*. The first line contains measures 1-9. The second line starts at measure 10 and includes markings for sections A and B, with a measure rest of 12 measures. The third line starts at measure 28. The fourth line starts at measure 37 and includes a marking for section C, a measure rest of 30 measures, and ends with an *attaca.* marking.

II. Variazioni.

Andante con moto.

Poco meno mosso.

Musical score for Trombone II, II. Variazioni. The score is in bass clef, key of B-flat major, and 3/8 time. It begins with a dynamic marking of *f*. The first line starts at measure 73 and includes markings for sections D and E, with measure rests of 21 and 19 measures. A violin part (Vn. I) is indicated starting at measure 28. The second line starts at measure 145 and includes markings for sections F and G, with measure rests of 12 and 15 measures. The third line starts at measure 158 and includes a marking for section H, a measure rest of 8 measures, and ends with an *attaca.* marking. The tempo marking *Tempo I.* and the *rit.* marking are also present.

Vivo e strepitoso.

III. Alborada.

Musical score for Trombone II, III. Alborada. The score is in bass clef, key of B-flat major, and 2/4 time. It begins with a dynamic marking of *f*. The first line contains measures 201-208. The second line starts at measure 209 and includes a marking for section H, a measure rest of 12 measures.

Rimsky-Korsakov — Capriccio Espagnole, Op. 34

The Orchestra Musician's
CD-ROM LIBRARY™

TROMBONE II (Bass Clef)

227 **I**

237 **K** 29 *lunga* *sf* *f* *attaca.*

IV. Scena e Canto gitano.

Allegretto.

273 *quasi Cadenza (I)* *Cadenza (II) Violin Solo.* **L** *a tempo* 10 *Cadenza (III) Flute Solo.*

286 *Cadenza (IV) Clarinet Solo.* *a tempo* 5 *Cadenza (V) Harp Solo.* *a tempo*

295 **M**

301 9 *f*

314 **N** 22 **O** 14 **P** 6

360 *Ob. Fl.* 7 8 9 10 **Q** *f*

365

371 4 *mf* *p cresc.* *attaca.*

V. Fandango asturiano.

382 20 **R** 25

431 **S** 40 **T** 18 **U** 12

Rimsky-Korsakov — Capriccio Espagnole, Op. 34

TROMBONE II (Bass Clef)

501 Vn. I, II

13 14 15 16 17 18 19

Detailed description: This staff shows measures 13 through 19. It is written in a bass clef with a key signature of two sharps (F# and C#). The music consists of a continuous eighth-note melody. Measure numbers 13, 14, 15, 16, 17, 18, and 19 are printed below the staff.

508

20 sf sf sf sf 2

Detailed description: This staff shows measures 20 and 21. Measure 20 contains a half note followed by a quarter rest. Measure 21 contains a quarter note followed by a quarter rest. The dynamic marking *sf* (sforzando) is placed below the notes. A fermata is placed over the second measure of measure 21. The number '2' is written above the staff at the end of measure 21.

517

18 sf W

Detailed description: This staff shows measures 18 and 19. Measure 18 contains a half note followed by a quarter rest. Measure 19 contains a quarter note followed by a quarter rest. The dynamic marking *sf* is below measure 18. A fermata is placed over the first measure of measure 19. The letter 'W' is written below the staff between measures 18 and 19.

544

X

Detailed description: This staff shows measures 18 and 19. Measure 18 contains a half note followed by a quarter rest. Measure 19 contains a quarter note followed by a quarter rest. The letter 'X' is written above the staff at the beginning of measure 18.

553

Coda.
Vivo. (Tempo di cominico.)

Detailed description: This staff shows measures 18 and 19. Measure 18 contains a half note followed by a quarter rest. Measure 19 contains a quarter note followed by a quarter rest. The tempo marking 'Coda. Vivo. (Tempo di cominico.)' is written above the staff.

561

11 sf f

Detailed description: This staff shows measures 11 and 12. Measure 11 contains a half note followed by a quarter rest. Measure 12 contains a quarter note followed by a quarter rest. The dynamic markings *sf* and *f* are below the notes. A fermata is placed over the second measure of measure 12. The number '11' is written above the staff at the end of measure 12.

582

Z

Detailed description: This staff shows measures 11 and 12. Measure 11 contains a half note followed by a quarter rest. Measure 12 contains a quarter note followed by a quarter rest. The letter 'Z' is written above the staff at the end of measure 12.

588

Detailed description: This staff shows measures 11 and 12. Measure 11 contains a half note followed by a quarter rest. Measure 12 contains a quarter note followed by a quarter rest.

595

Presto.

Detailed description: This staff shows measures 11 and 12. Measure 11 contains a half note followed by a quarter rest. Measure 12 contains a quarter note followed by a quarter rest. The tempo marking 'Presto.' is written above the staff.

603

Detailed description: This staff shows measures 11 and 12. Measure 11 contains a half note followed by a quarter rest. Measure 12 contains a quarter note followed by a quarter rest.

Nicolai Rimsky-Korsakov
Capriccio Espagnole, Op. 34

Tuba.

I. Alborado.

Vivo e strepitoso.

A 12 B 30 *attacca*

II. Variazioni.

Andante con moto. D

19 E Poco meno mosso. 4 *attacca*

Tempo I.

4 *f* 5 6 7 8 12 F 15 G 8 3 *ril. attacca*

III. Alborado.

Vivo e strepitoso.

H 12 I *f* K 29 *lunga* *f* *attacca*

Tuba.

IV. Scena e Canto gitano.

Allegretto.

quasi Cadenza (I) Cadenza (II) Violino Solo. **L** *a tempo* Cadenza (III) Flauto Solo. Cadenza (IV) Clarinette Solo.

6 8 10

a tempo Cadenza (V) Arpa Solo *a tempo*

5 7 8 9 10

9

11 12 13 14

15 22 14

P4 Ob. Fl. *tr.*

5 6 7 8 9 10

Q

11 12 13 14 15 16 17 18 19 20

21 22 23 24

24 *cresc.* 25 *attacca*

V. Fandango asturiano.

20 **R** 25

20 21 22 23 24 25

Tuba.

S 40 T 18 U 12 Viol. I u. II. 13 14 15 16

17 18 19 20 *fz* *fz* 2

2 V 18 19 *f* *W*

X 2

Coda.
Vivo. (Tempo di comincio.) 2 4 Y

11 *fz* *>*

Z 1 1 1 1 1 Presto.